

Introducing The Seafronter

Available for ownership exclusively at Hoburne Naish, the Wessex Seafronter is a truly bespoke home from home that showcases a new direction for Omar's next generation of holiday homes.

With cutting-edge design, striking lines and incredible volume, this holiday home is superbly complimented with Hoburne's bespoke tiered decking – perfect for entertaining and taking in **breathtaking views across the Solent**.

Every single element of the Seafronter Lodge oozes style and sophistication. Its generous catalogue of features includes mood lighting, integrated Bluetooth speakers, **Bosch kitchen appliances, an integrated Kaeolo wine cooler** and a double walk-in shower with twin rainfall shower heads.

Owing to the floor-to-ceiling glazing, **the living area is flooded with natural light**, accentuating the already spacious design.



Wessex Seafronter

Front Row

Total Price £650,000*

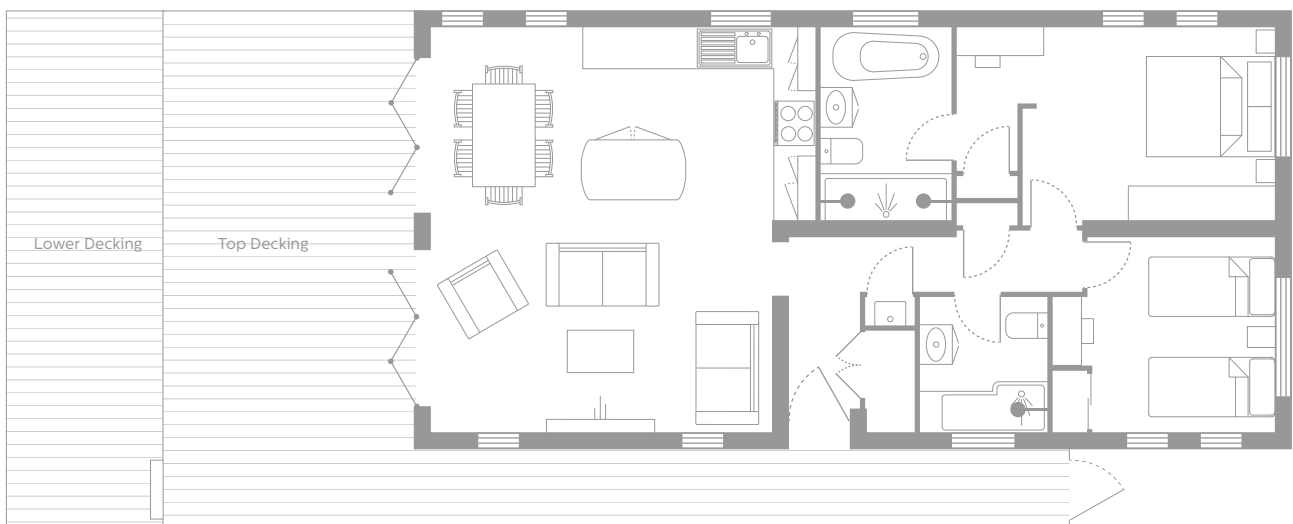
Sleeps up to 4

Two bedrooms

Size 22' x 44'

Total package price includes

- › All siting and connections
- › VAT included
- › Decking
- › Fully furnished
- › One year's insurance included*
- › Includes current year's pitch fees



Plus

- › Allocated parking spaces
- › Central heating
- › En-suite from master bedroom
- › Front patio doors
- › Quooker brand kitchen taps
- › Rapid chill wine cooler
- › Integrated kitchen appliances

* Restrictions apply.

For further information contact the ownership team,

email [✉ NaishOwnership@hoburne.com](mailto:NaishOwnership@hoburne.com)

or call [📞 01425 282541](tel:01425 282541)



External elegance

- › Private parking spaces for each holiday home
- › EVA-07S-SE single-phase, fast AC electric vehicle charger per holiday home
- › CanExcel Ced'R-View cladding in 'Coastline' colour
- › Panoramic sea views across the Solent to the Isle of Wight
- › Bespoke tiered decking offering plenty of outdoor entertainment space
- › Option to add hot tub





Living area

- › Floor-to-ceiling concertina doors to front aspect
- › Bright & airy colour scheme, accentuated by natural light
- › Timeless furnishings and fabrics
- › Integrated Bluetooth ceiling speakers
- › Mood lighting for the added wow factor
- › Elegant seating and dining with ample space for entertaining





Kitchen

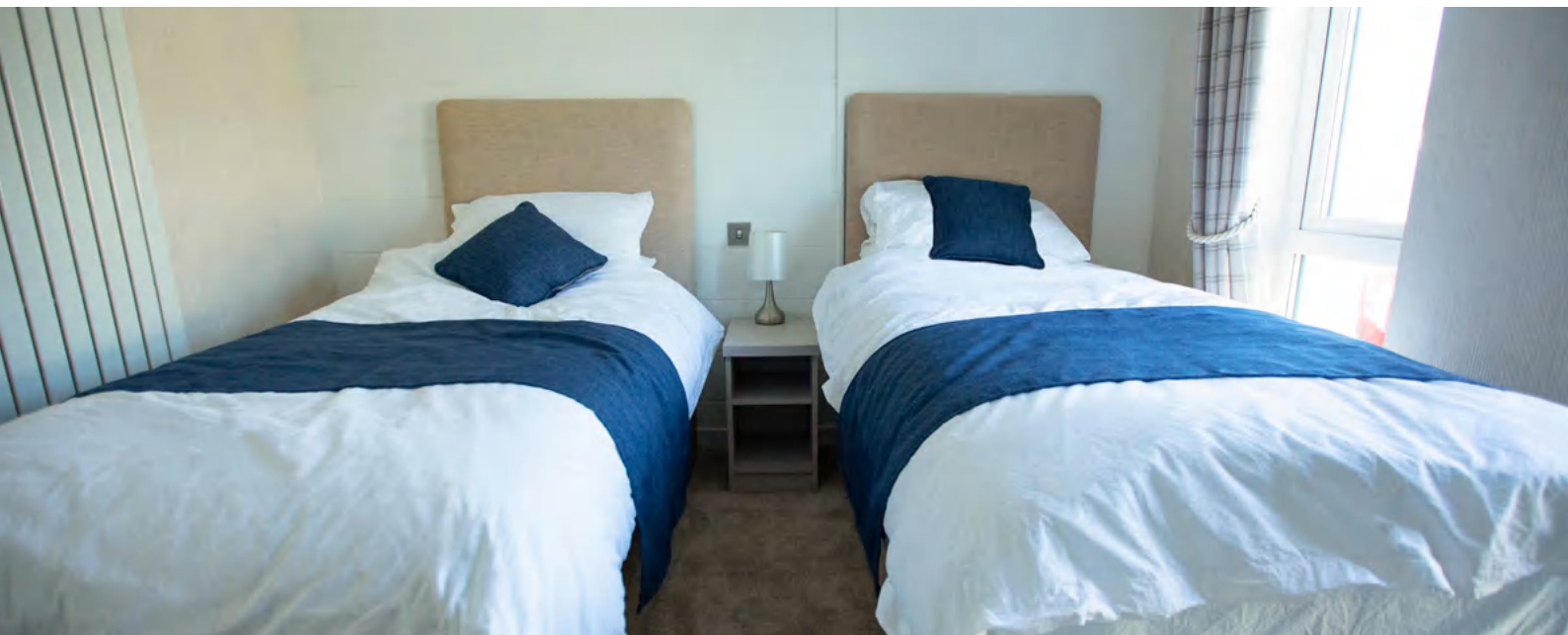
- › High-end Bosch kitchen appliances including integrated fridge freezer, dishwasher and washing machine
- › Separate utility area to house washing machine and laundry
- › Ceramic sink for added durability
- › Quooker Flex tap for hot, cold and boiling water
- › Kitchen island with integrated Kaelo wine cooler





Bedrooms

- › Contemporary textured panelling feature wall in the master bedroom
- › King-sized bed with additional storage in the master bedroom
- › Extensive wardrobe space with sliding doors
- › Twin beds with the option to convert to a double
- › Choice of two or three-bedroom model





Bathrooms

- › En-suite with freestanding slipper bath and waterfall taps
- › En-suite spa-style double walk-in shower with twin rainfall shower heads
- › P-shaped bath and Mira React ERD shower to the family bathroom

